



Thank you for considering the National Corvette Museum for your facility rental venue. We proudly offer everything you need for creating a colorful and memorable event. The Museum is an all-occasion facility that creates the perfect atmosphere for all types of educational and social functions, including corporate events, training, meetings, workshops, Christmas parties, retirement dinners, weddings and rehearsal dinners. You will receive personal, top quality service in the exciting surroundings found at the Museum. Our out of the ordinary facility is the perfect setting to enhance any engagement. Hosting your event at the Museum offers you and your guests an extraordinary experience inside a first class facility dedicated to America's Sports Car - the Corvette, with tours included as part of many of the packages.

**FACILITY OVERVIEW**

For more examples of great functions at the Museum, with blogs entries by event hosts, please visit our website at [www.corvettemuseum.org/facilityrentals](http://www.corvettemuseum.org/facilityrentals).

Jana Sublett  
 Facility Rental Coordinator  
[jana@corvettemuseum.org](mailto:jana@corvettemuseum.org)  
 270-467-8828 or 800-538-3883 x128  
[www.corvettemuseum.org](http://www.corvettemuseum.org)

**FOR RENTAL RATES CONTACT**



Your event attendees will love the convenient location and easy access to the Museum. The Museum is at I-65, exit 28 in Bowling Green, Kentucky - just one hour north of Nashville and less than two hours south of Louisville. Once you exit the interstate, turn left at the first stop light and you're here!

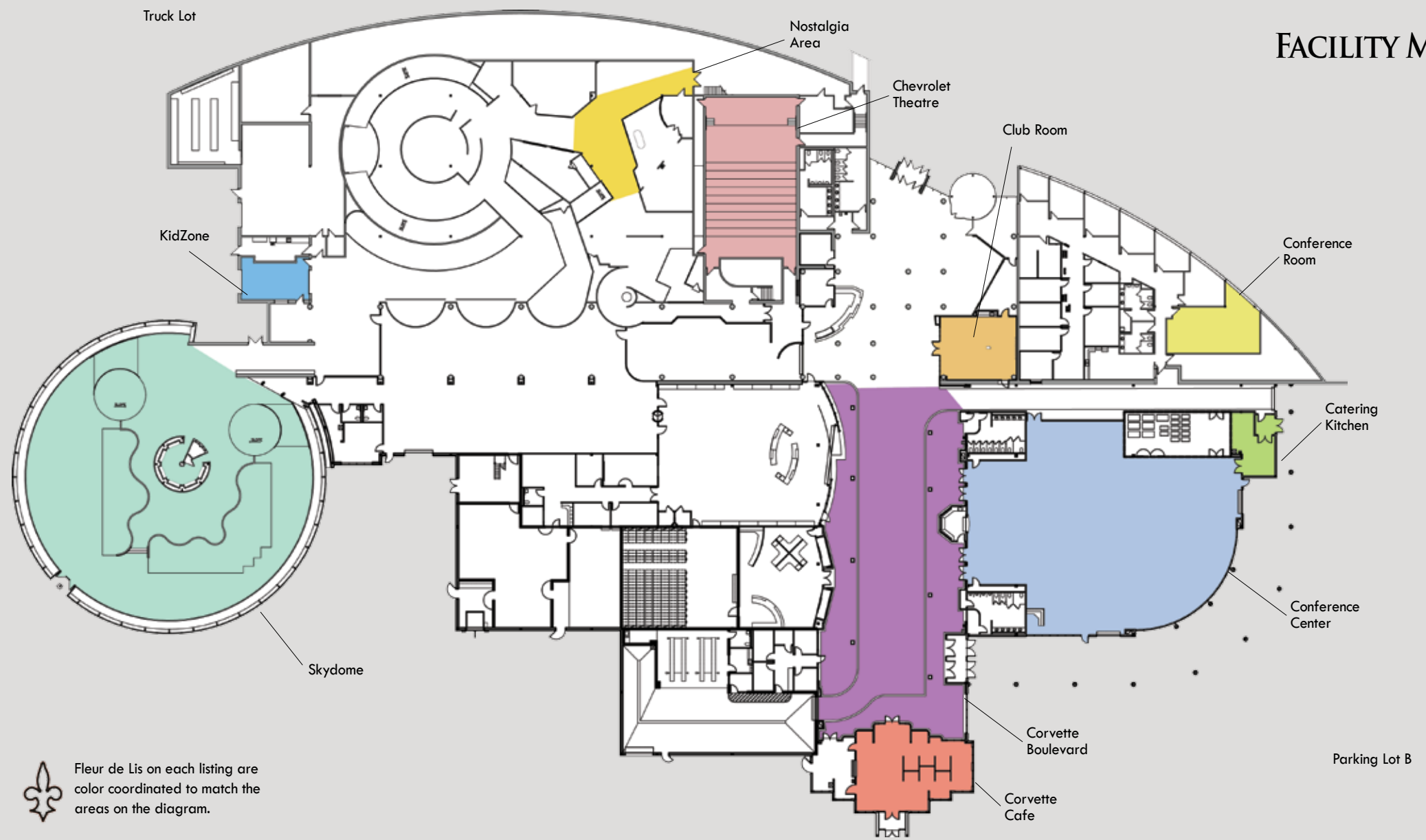
**CONVENIENT LOCATION**

**FACILITY RENTALS**  
*An Exciting Change of Space*



Events | Meetings | Training | Weddings | Receptions | Parties

**FACILITY MAP**



Fleur de Lis on each listing are color coordinated to match the areas on the diagram.

**WHY CHOOSE THE NATIONAL CORVETTE MUSEUM?**

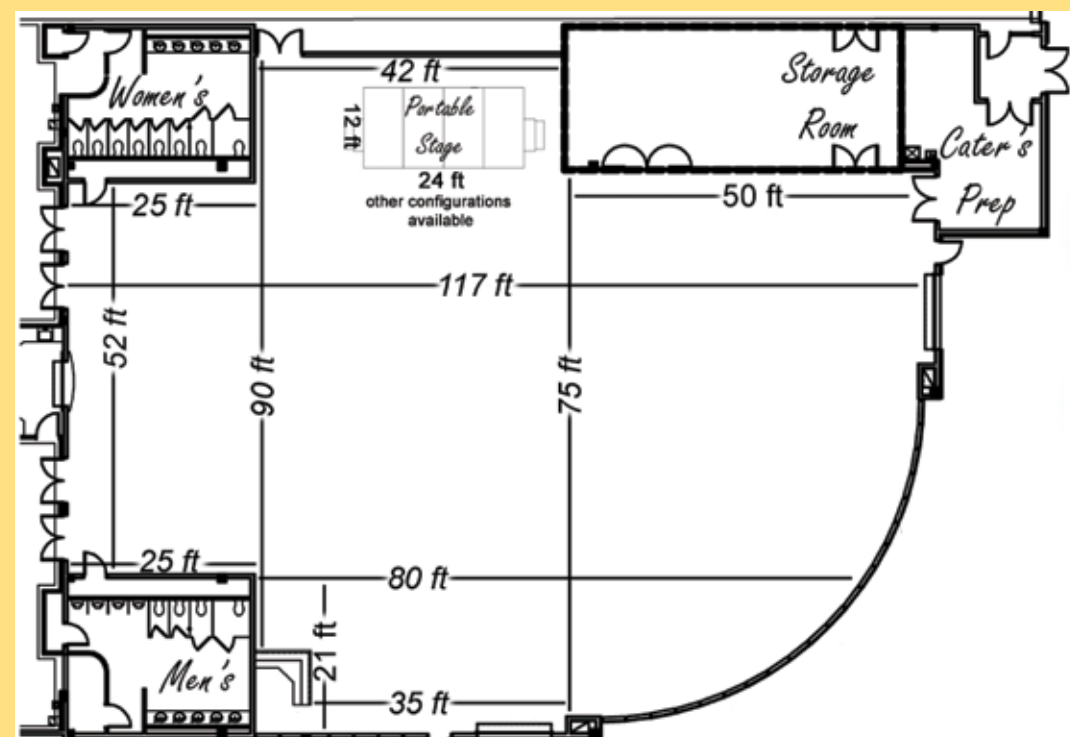
- **Limitless Catering Options**  
 While the National Corvette Museum offers on-site catering, you have the option to bring in your own food - whether you hire a caterer or choose to host a potluck! This gives you the flexibility to select a dining option to fit your budget and preference.
- **Affordable Venue Pricing**  
 Our spaces are priced to meet just about any size budget, whether you are having a small, intimate gathering or a large affair.
- **Unique Atmosphere**  
 Many businesses, organizations and individuals who have hosted their functions at the Museum have reported higher attendance simply because of the exciting venue!
- **Convenient Location**  
 The Museum is visible from I-65 and easy for travelers to reach. Read more about our accessibility on the back of this brochure.

**FACILITY SERVICES AND FEES**

- Additional fees per hour after minimum rental.
- NCM Business Member Discount 10%.
- Any outside catering service may be used, but NCM will be happy to make recommendations. On-site catering may be available through the Corvette Cafe.
- Discounted fee for Museum tours with rental. Guided tours available for a fee.
- FotoFX services are available for your event. Choose from a variety of backgrounds. Packages starting at \$20.
- Visit our website for more images, pricing and how you can host an event here at [www.corvettemuseum.org/facilityrentals](http://www.corvettemuseum.org/facilityrentals).

# CONFERENCE CENTER

A multi-purpose facility with banquet seating for 500 or theatre seating for over 675, the spacious room includes a prep kitchen, 12' x 24' portable stage with lighting, bar area, outdoor covered display space and two overhead doors. Also features an exceptional sound system with two cordless mics and two projectors with screens. Podium available upon request.



## CORVETTE CLUB ROOM

A smaller, intimate space, the Corvette Club Room has a large board room table that seats 18, with total room capacity at 35. A bar and sink area is included.

Room also has white board, widescreen television with DVD player and drop down projection screen.

Additional tables and chairs can be brought in for classroom style seating.



## CORVETTE CAFE

The 50s themed diner includes a combination of booths, tables and a bar with enough seating for 80.



## CHEVROLET THEATRE

The Chevrolet Theatre includes seating for 165 with a 12'd x 39'w stage at the front, 16'h x 28'w screen, and a state-of-the-art surround sound system. Podium and microphone available upon request and HD projection system is accessible.



## CONFERENCE ROOM

Located within the administrative offices and structured as a board room. Restrooms and a kitchen are located across the hall. The room has a countertop prep area, and rectangle tables can be brought in for a buffet line or to hold materials. Board table seats 24, total room capacity 48. 800 sq. ft.



## KIDZONE

Located within the Museum exhibit area, the KidZone is perfect for birthday parties and other smaller gatherings. The space holds up to 25 guests. Price includes Museum tour.



## AFTER HOURS FACILITIES

The following areas are only available for rental after Museum operating hours with a minimum four hour rental.\*

### SKYDOME\*

Enjoy a reception or other special occasion within the spacious Skydome. With space for 100 seated guests amongst the Corvettes, your event will be one to remember. Self-guided museum tour included.



### NOSTALGIA AREA\*

Host a gathering or meeting in the midst of one of the favorite Museum displays. The Nostalgia Area accommodates 48 seated guests. Self-guided museum tour included.



### CORVETTE BOULEVARD\*

The crown jewel of the Museum expansion, Corvette Boulevard boasts space for 200 seated guests, but is also perfect for trade show booths and other functions. Electrical outlets are available in many of the "street lamps" as well as along the wall.



### PARKING LOT "B"

The outdoor, paved space is a semi-private lot which can be used for a variety of functions and is ideal for car cruise-ins, etc.



### TRUCK LOT

The outdoor, paved space is another semi-private lot which can be used for a variety of functions and is great for vendor booths and displays, etc.



### AMPHITHEATER

Sloped grassy area fronted by a 84'w x 40'd covered stage. The space accommodates 10,000 guests with plenty of parking on the NCM grounds.

